

# LS Master-K CPU Direct

Refer to these sections for details:

- [Supported Series](#)
- [PLC Connection Settings](#)
- [LoopEdge DeviceHub Configuration](#)
- [Dev392pxice Addresses](#)

## Supported Series

LS Industrial Systems Master-K CPU Direct series (K80S, K120S, K200S, K300S, K1000S, K7M)

Website: <http://www.lsis.com/>

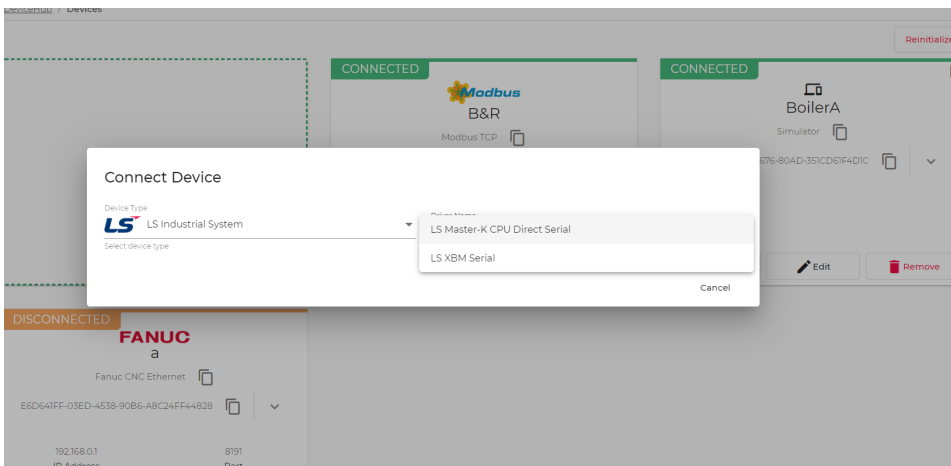
## PLC Connection Settings

Parameters	Recommended	Options	Description
PLC Type	LS Master-K CPU Direct		
PLC Interface	RS232	RS232 or RS485	
Baud Rate	38400	9600, 19200, 38400	
Data Bits	8	8	
Parity	None	Odd, Even, None	
Stop Bits	1	1	
PLC Station #	0	0 - 31	

## LoopEdge DeviceHub Configuration

To configure DeviceHub for this LS Master-K CPU Direct PLC:

1. **DeviceHub > Add Device**  
**Type:** LS Industrial System  
**Driver:** LS Master-K CPU Direct



2. Enter details specific to your environment and click **Add Device**.

### Connect Device

Device Type  
**LS Industrial System**  
Select device type

Driver Name  
**LS Master-K CPU Direct Serial**  
Select device driver

Name  
 \_\_\_\_\_  
Device Name that describes your asset.

Description  
**LS Master device**  
Description of the device or an asset.

Data Bits  
**8**  
Serial communication databits parameter.

Communication Port  
**/dev/ttyS0**  
Local Serial connection file path.

Baud Rate  
**38400**  
Serial communication baudrate parameter.

Parity  
**None**  
Serial communication parity parameter.

Stop Bits  
**1**  
Serial communication stopbits parameter.

Enable Data Store
Cancel
**Add Device**

## Dev392pxice Addresses

Bit/Word	Device Type	Format	Range	Description
B	PW_Bit	DDDdd	0 ~ 25515	I/O Relay (P)
B	KW_Bit	DDDdd	0 ~ 25515	Keep Relay (K)
B	MW_Bit	DDDdd	0 ~ 25515	Auxiliary Relay (M)
B	LW_Bit	DDDdd	0 ~ 25515	Link Relay (L)
B	FW_Bit	DDDdd	0 ~ 25515	Special Relay (F)
B	DW_Bit	DDDdd	0 ~ 999915	
B	TX	DDD	0 ~ 255	
B	CX	DDD	0 ~ 255	
B	SX	DDDD	0 ~ 9999	
W	MW	DDD	0 ~ 255	Word type for M
W	LW	DDD	0 ~ 255	Word type for L
W	FW	DDD	0 ~ 255	Word type for F
W	PW	DD	0 ~ 63	
W	KW	DD	0 ~ 31	
W	TW	DDD	0 ~ 255	Timer Present value
W	CW	DDD	0 ~ 255	Counter Present value
W	DW	DDDD	0 ~ 9999	Data register (D)