

Rockwell Micro850

Refer to these sections for details:

- [Supported Series](#)
- [PLC Connection Settings](#)
- [LoopEdge DeviceHub Configuration](#)
- [Supported Device Types](#)

Supported Series

Rockwell Micro800 Ethernet Module.

Website: <http://ab.rockwellautomation.com/>



Certain device drivers will *not* have a list of register names in the DeviceHub Add Tag form. These are *Free Tag* PLCs. For Free Tag requirements, see [Troubleshoot Device Connectivity Status](#).

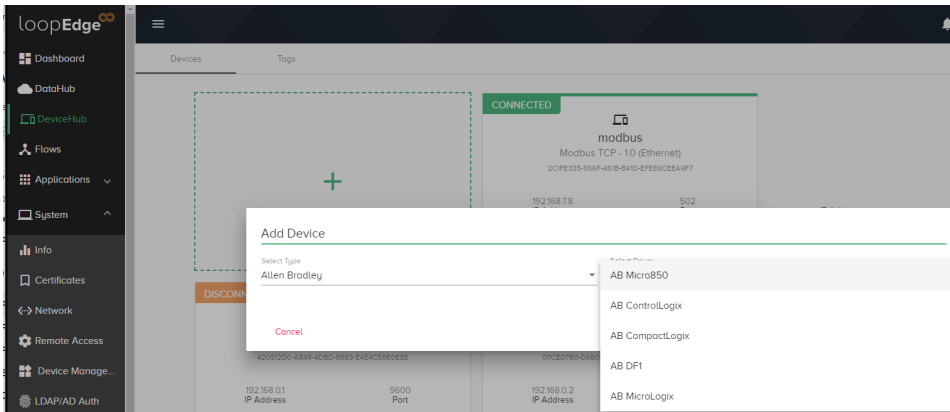
PLC Connection Settings

Parameters	Recommended	Options	Notes
PLC Type	Rockwell Micro850 (Ethernet)		
PLC Interface	Ethernet		
Port #	44818		
HMI Station #	0		
PLC Station #	1		

LoopEdge DeviceHub Configuration

To configure DeviceHub for this Micro850 PLC:

1. **DeviceHub > Device**
Type: Allen-Bradley
Driver: AB Micro850



2. Enter details specific to your environment and click **Add Device**.

Add Device

Select Type: **Allen Bradley** Select Driver: **AB Micro850**

Name: _____
Give rockwell device a name

Description: **rockwell device**
This is a description of device.

Network Port: **44818** Slot Number: **0**
This is a network port of device. This is a slot number of communication module in Rockwell PLC.

Network Address: **192.168.01**
This is a IP Address of device.

Supported Device Types

Data Type	Data Format	Description
Bool	bit	
Byte	16-bit BCD, Hex, Binary, Unsigned	8-bit
SInt	16-bit BCD, Hex, Binary, Signed	8-bit
USInt	16-bit BCD, Hex, Binary, Unsigned	8-bit
Word	16-bit BCD, Hex, Binary, Unsigned	16-bit
Int	16-bit BCD, Hex, Binary, Signed	16-bit
UInt	16-bit BCD, Hex, Binary, Unsigned	16-bit
DWord	32-bit BCD, Hex, Binary, Unsigned	32-bit
DInt	32-bit BCD, Hex, Binary, Signed	32-bit
Real	32-bit Float	32-bit
UDInt	32-bit BCD, Hex, Binary, Unsigned	32-bit
String	ASCII Object	Length=word